

IRON PIN SET
GOVERNMENT CORNERS SET

COUNTRY DREAM SUBDIVISION

A SUBDIVISION OF A PORTION OF THE WEST 1/2 OF THE NORTHWEST 1/4 OF SECTION 1, TOWNSHIP 20 SOUTH, RANGE 3 WEST OF THE 6TH PRINCIPAL MERIDIAN IN McPHERSON COUNTY KANSAS.

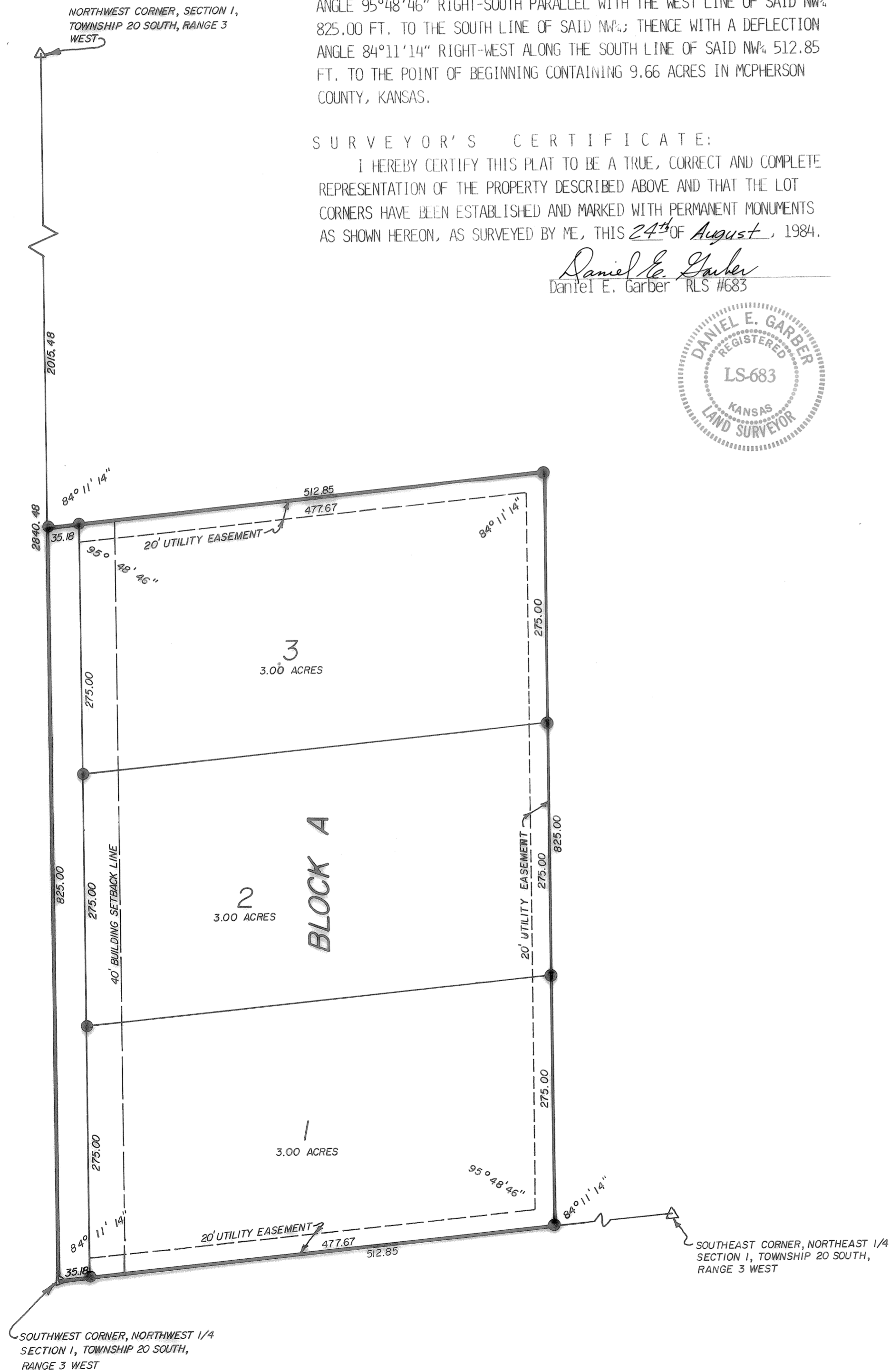
DESCRIPTION:

BEGINNING AT THE SOUTHWEST CORNER OF THE NORTHWEST QUARTER OF SECTION 1, TOWNSHIP 20 SOUTH, RANGE 3 WEST OF THE 6TH PRINCIPAL MERIDIAN; THENCE NORTH ALONG THE WEST LINE OF SAID NW: 825.00 FT.; THENCE WITH A DEFLECTION ANGLE 84°11'14" RIGHT-EAST PARALLEL WITH THE SOUTH LINE OF SAID NW: 512.85 FT.; THENCE WITH A DEFLECTION ANGLE 95°48'46" RIGHT-SOUTH PARALLEL WITH THE WEST LINE OF SAID NW: 825.00 FT. TO THE SOUTH LINE OF SAID NW; THENCE WITH A DEFLECTION ANGLE 84°11'14" RIGHT-WEST ALONG THE SOUTH LINE OF SAID NW: 512.85 FT. TO THE POINT OF BEGINNING CONTAINING 9.66 ACRES IN McPHERSON COUNTY, KANSAS.

SURVEYOR'S CERTIFICATE:

I HEREBY CERTIFY THIS PLAT TO BE A TRUE, CORRECT AND COMPLETE REPRESENTATION OF THE PROPERTY DESCRIBED ABOVE AND THAT THE LOT CORNERS HAVE BEEN ESTABLISHED AND MARKED WITH PERMANENT MONUMENTS AS SHOWN HEREON, AS SURVEYED BY ME, THIS 24th OF August, 1984.

Daniel E. Garber
Daniel E. Garber RLS #683



EASEMENTS:

EASEMENTS ARE HEREBY DEDICATED TO THE PUBLIC, THE RIGHTS-OF-WAY OF WHICH ARE SHOWN AS DASHED LINES ON THE ACCOMPANYING PLAT. SAID EASEMENTS MAY BE EMPLOYED AS A COVENANT RUNNING WITH THE LAND FOR THE PURPOSE OF INSTALLING, REPAIRING, REINSTALLING, REPLACING AND MAINTAINING ANY FORMS AND TYPES OF PUBLIC UTILITIES NOW OR HERE-AFTER GENERALLY UTILIZED BY THE PUBLIC.

STREETS:

STREETS SHOWN ON THIS PLAT AND NOT HERETOFORE DEDICATED TO THE PUBLIC ARE HEREBY SO DEDICATED.

BUILDING SETBACK:

BUILDING SETBACK LINES ARE HEREBY ESTABLISHED AS SHOWN ON THE ACCOMPANYING PLAT AND NO BUILDING OR PORTION THEREOF SHALL BE BUILT OR CONSTRUCTED BETWEEN THIS LINE AND THE STREET LINE.

OWNER'S CERTIFICATION AND DEDICATION:

STATE OF KANSAS COUNTY OF McPHERSON SS
THIS IS TO CERTIFY THAT THE UNDERSIGNED OWNER OF THE LAND DESCRIBED ABOVE HAS CAUSED THE SAME TO BE SURVEYED AND SUBDIVIDED ON THE ACCOMPANYING PLAT INTO LOTS, BLOCKS, STREETS AND OTHER PUBLIC WAYS UNDER THE NAME OF "COUNTRY DREAM SUBDIVISION", A SUBDIVISION OF A PORTION OF THE W 1/2 OF THE NW 1/4 OF SECTION 1, TOWNSHIP 20 SOUTH, RANGE 3 WEST OF THE 6TH PRINCIPAL MERIDIAN; THAT ALL STREETS AND EASEMENTS AS DENOTED ON THE PLAT ARE HEREBY DEDICATED TO AND FOR THE USE OF THE PUBLIC FOR THE PURPOSE OF CONSTRUCTING, OPERATING, MAINTAINING AND REPAIRING PUBLIC IMPROVEMENTS; AND FURTHER THAT THE LAND CONTAINED HEREIN IS HELD AND SHALL BE CONVEYED SUBJECT TO ANY APPLICABLE RESTRICTIONS, RESERVATIONS AND COVENANTS NOW ON FILE OR HEREAFTER FILED IN THE OFFICE OF THE REGISTER OF DEEDS OF McPHERSON COUNTY, KANSAS.

Date signed: August 27, 1984

Louise M. Stout
Louise M. Stout, Owner

STATE OF KANSAS COUNTY OF McPHERSON SS

THE FOREGOING INSTRUMENT WAS ACKNOWLEDGED BEFORE ME THIS 27th DAY OF August, 1984, BY LOUISE M. STOUT.

R. Dean Elliott
R. Dean Elliott
NOTARY PUBLIC
STATE OF KANSAS
My commission expires 2-29-86

STATE OF KANSAS CITY OF McPHERSON SS

THIS PLAT WAS APPROVED BY THE McPHERSON CITY PLANNING COMMISSION ON August 28, 1984, AND WAS RECOMMENDED FOR APPROVAL BY THE GOVERNING BODY OF THE CITY OF McPHERSON, KANSAS.

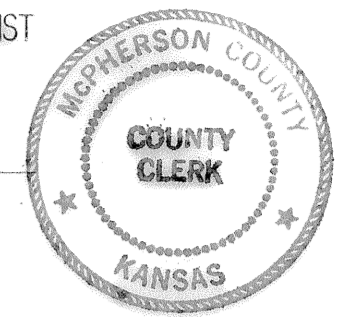
William W. Hobbs
William W. Hobbs
Chairman

ATTEST: *Belvin J. Tarum*
Belvin J. Tarum
Secretary

STATE OF KANSAS COUNTY OF McPHERSON SS

I, THE UNDERSIGNED, COUNTY CLERK OF McPHERSON COUNTY, KANSAS, DO HEREBY CERTIFY THAT AT THE DATE OF THIS CERTIFICATE, ALL CURRENTLY DUE AND OWING TAXES AND SPECIAL ASSESSMENTS OF ANY KIND ASSESSED AGAINST ANY OF THE LAND INCLUDED IN THIS PLAT, HAVE BEEN PAID.

Date signed: *Sept 7, 1984*
Margaret Bryan
Margaret Bryan
County Clerk



STATE OF KANSAS COUNTY OF McPHERSON SS

BE IT KNOWN, THAT THE ATTACHED PLAT WAS SUBMITTED TO ME AND WAS APPROVED, THIS 30th DAY OF August, 1984.

Kennard D. Boldt
Asst. Gen. Mgr. - Board of Public Utilities

STATE OF KANSAS COUNTY OF McPHERSON SS

THIS PLAT APPROVED AND ALL DEDICATIONS SHOWN HEREON ARE HEREBY ACCEPTED BY THE GOVERNING BODY OF THE CITY OF McPHERSON, KANSAS ON August 29, 1984.

Delbert E. Corabb
Mayor

ATTEST: *William W. Hoering*
William W. Hoering
City Clerk

STATE OF KANSAS COUNTY OF McPHERSON SS

THIS PLAT APPROVED AND ALL DEDICATIONS SHOWN HEREON ARE HEREBY ACCEPTED BY THE BOARD OF COUNTY COMMISSIONERS OF McPHERSON COUNTY, KANSAS THIS 4th DAY OF Sept, 1984.

Waldo Puckin
Commission Chairman



STATE OF KANSAS COUNTY OF McPHERSON SS

BE IT KNOWN, THAT THE ATTACHED PLAT WAS SUBMITTED TO ME AND THAT THE SAME WAS HEREBY APPROVED THIS 28 DAY OF August, 1984.

Gary A. Bly, P.E.
City Engineer

STATE OF KANSAS COUNTY OF McPHERSON SS

BE IT KNOWN, THAT THE ATTACHED PLAT WAS SUBMITTED TO ME AND WAS APPROVED THIS 29 DAY OF August, 1984.

Malvin Ferguson
County Engineer

STATE OF KANSAS COUNTY OF McPHERSON SS

BE IT KNOWN, THAT THE ATTACHED PLAT WAS SUBMITTED TO ME AND WAS APPROVED THIS 29th DAY OF August, 1984.

Robert C. Lacey
City Attorney



RECORDED THIS 18 DAY OF Sept., 1984 A.D. AT 2:10 P.M. #022
FEE PAID: \$20.00
FILED IN PLAT FILE A, NUMBER 76

Reuelie Nelson
Register of Deeds

ENTERED IN THE TRANSFER RECORD THIS 4th DAY OF Sept., 1984.

Margaret Bryan
County Clerk

PREPARED FOR: LOUISE M. STOUT	
BY: GARBER SURVEYING SERVICE, P.A. 217 EAST FIRST AVENUE SUITE 16 HITCHINSON, KANSAS 67501 PHONE 316-665-7032	
DRAWN BY: R.E. OWEN	DATE: 8-23-1984
SCALE: 1" = 100'-0"	PROJECT NO: 684-113